



Tarbert Harbour
THE HEART OF THE HERITAGE VILLAGE

Tarbert (Loch Fyne) Harbour Authority
Harbour Master's Office

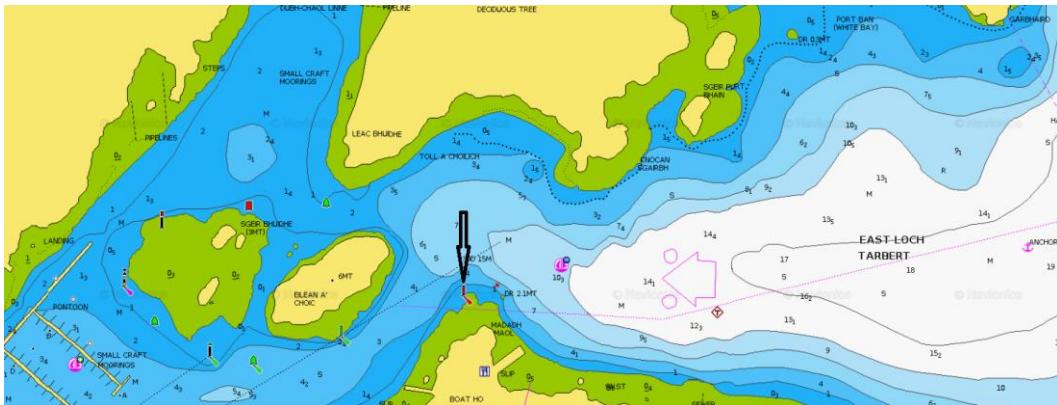
NOTICE TO MARINERS

THA 2/2018

**ENTRANCE SOUTH SIDE
RED LIGHT UNLIT**

Mariners are advised that :-

- Loch Fyne East Loch Tarbert, Madadh Maol Entrance South Side $005^{\circ} 24'.246''W$
 $55^{\circ} 52'.010''N$ South Channel Entrance is unlit



Donald McAllister
Tarbert Harbour Master
3rd December 2018

Tarbert Harbour VHF channel 14 or telephone 01880 820 344