



Tarbert Harbour
THE HEART OF THE HERITAGE VILLAGE

Tarbert (Loch Fyne) Harbour Authority
Harbour Master's Office

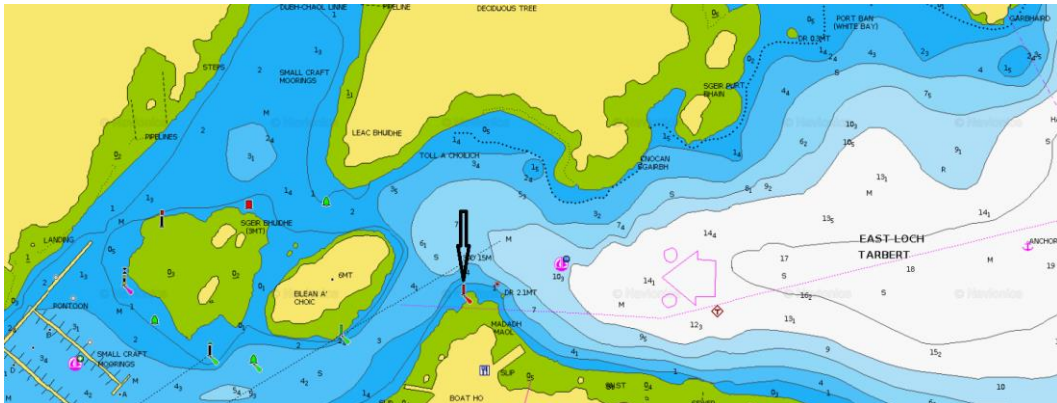
NOTICE TO MARINERS

THA 3(2)/2018

**SOUTH CHANNEL ENTRANCE
RED LIGHT REINSTATED
005° 24'.246"W 55° 52'.010"N**

Mariners are advised that :-

- Loch Fyne East Loch Tarbert, Madadh Maol South Channel Entrance (noted as unlit in THA 2/2018) **has been reinstated.**



Donald McAllister
Tarbert Harbour Master
5th December 2018

Tarbert Harbour VHF channel 14 or telephone 01880 820 344